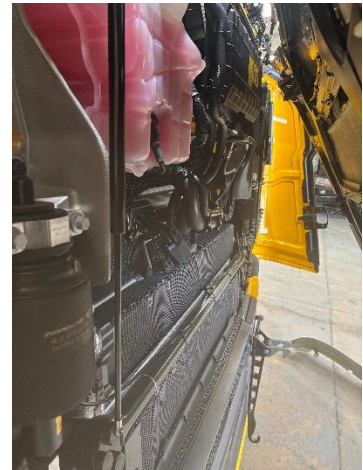


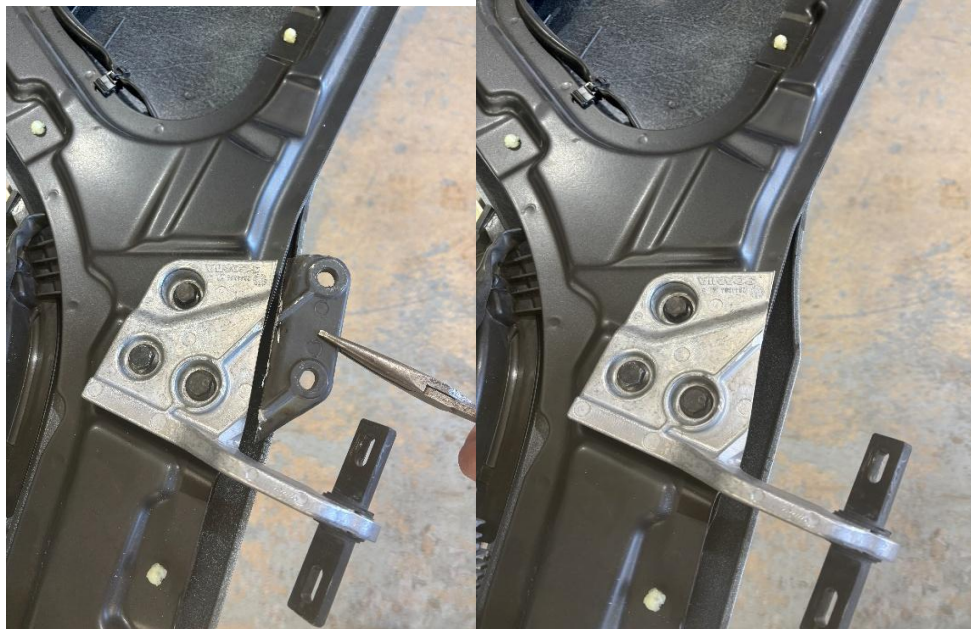
1.



2.

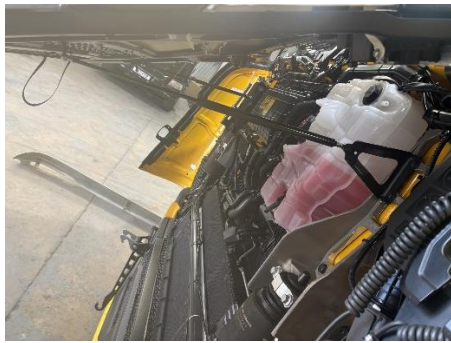
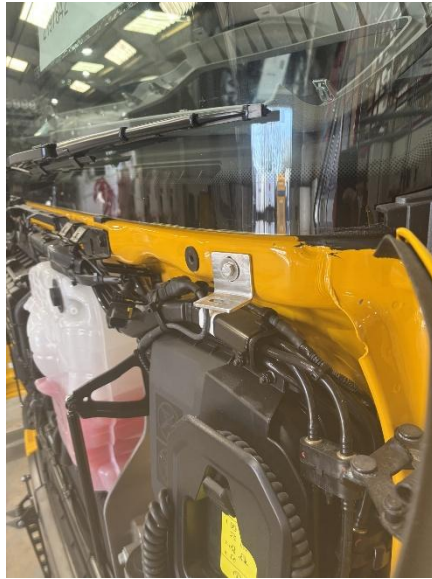


3.





4.



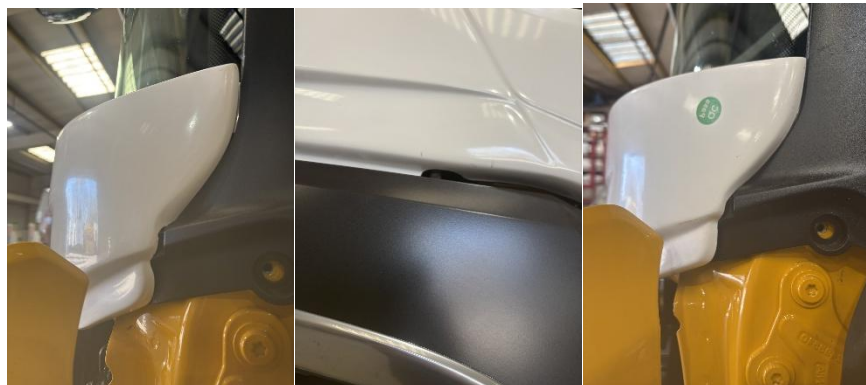
5.



6.



7.



8.

Scania N/G window panel – Low / Normal

1. Remove all plastic panels from around wipers and grille grab handles.
2. Disconnect plug for lights and take off the two Scania struts.
3. Remove grille and cut hinges and top edge of grille.
4. Fit side brackets to truck, leave slightly loose for adjustment. (up & down adjustment truck side)
5. Replace grille. Connect back 1 Scania strut, then replace the other Scania strut with the one provided. Plug in light connector.
6. Close grille, leaving corners open.
7. Fit window panel, centre bracket first. Adjust window panel, so there's a nice even gap all the way across.
8. Slight adjustment might be needed to the fibreglass, as shown in picture 8.